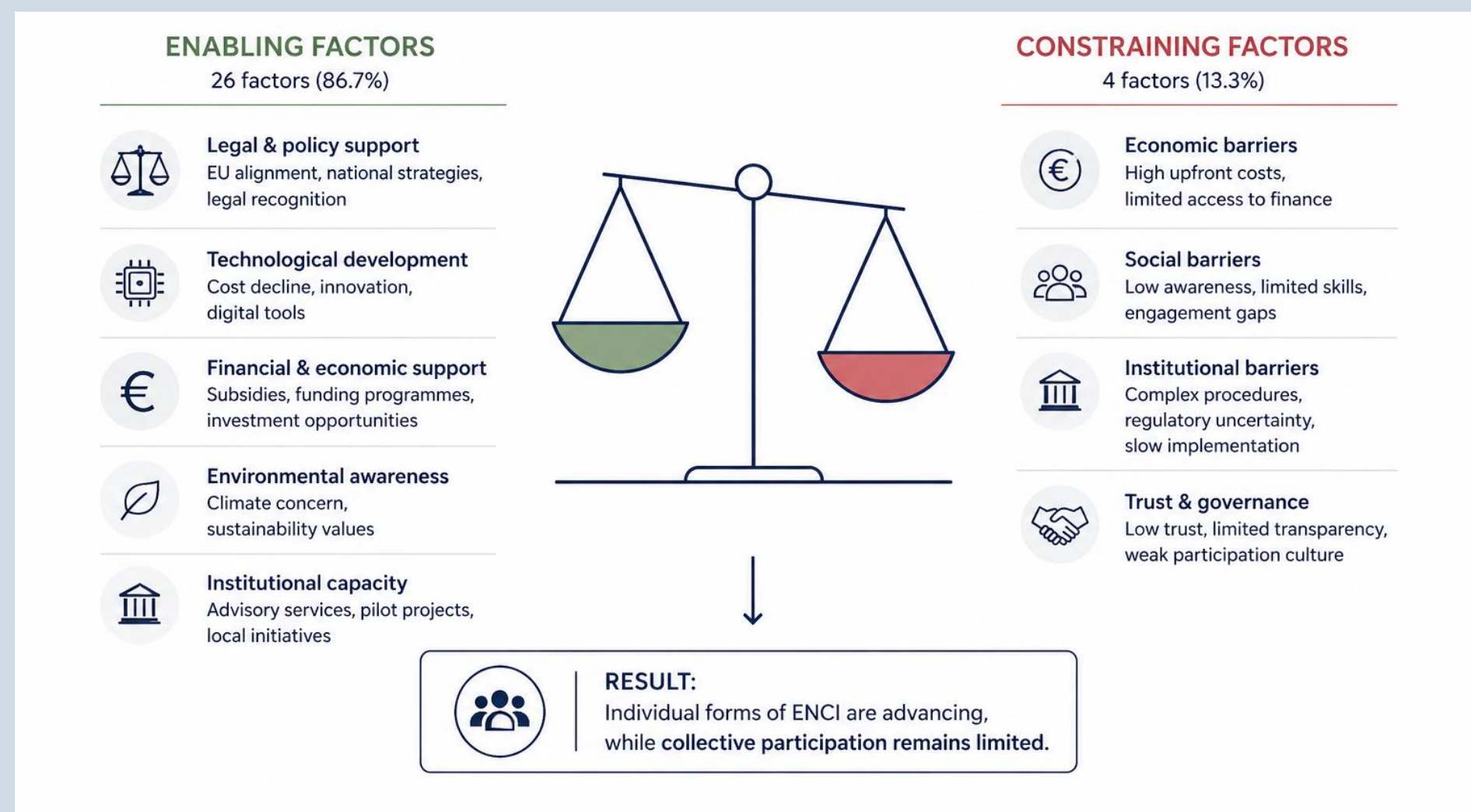


Energy citizenship in Latvia is legally enabled, but limited in practice due to socio-economic and institutional barriers.



The PESTEL assessment shows a predominantly enabling environment (26 of 30 factors), indicating generally favourable institutional and policy conditions for energy citizenship development in Latvia.

Support is strongest in legal and technological dimensions, where EU policy transposition, national frameworks and rapid renewable energy expansion create formal opportunities for citizen participation, particularly at the individual level.

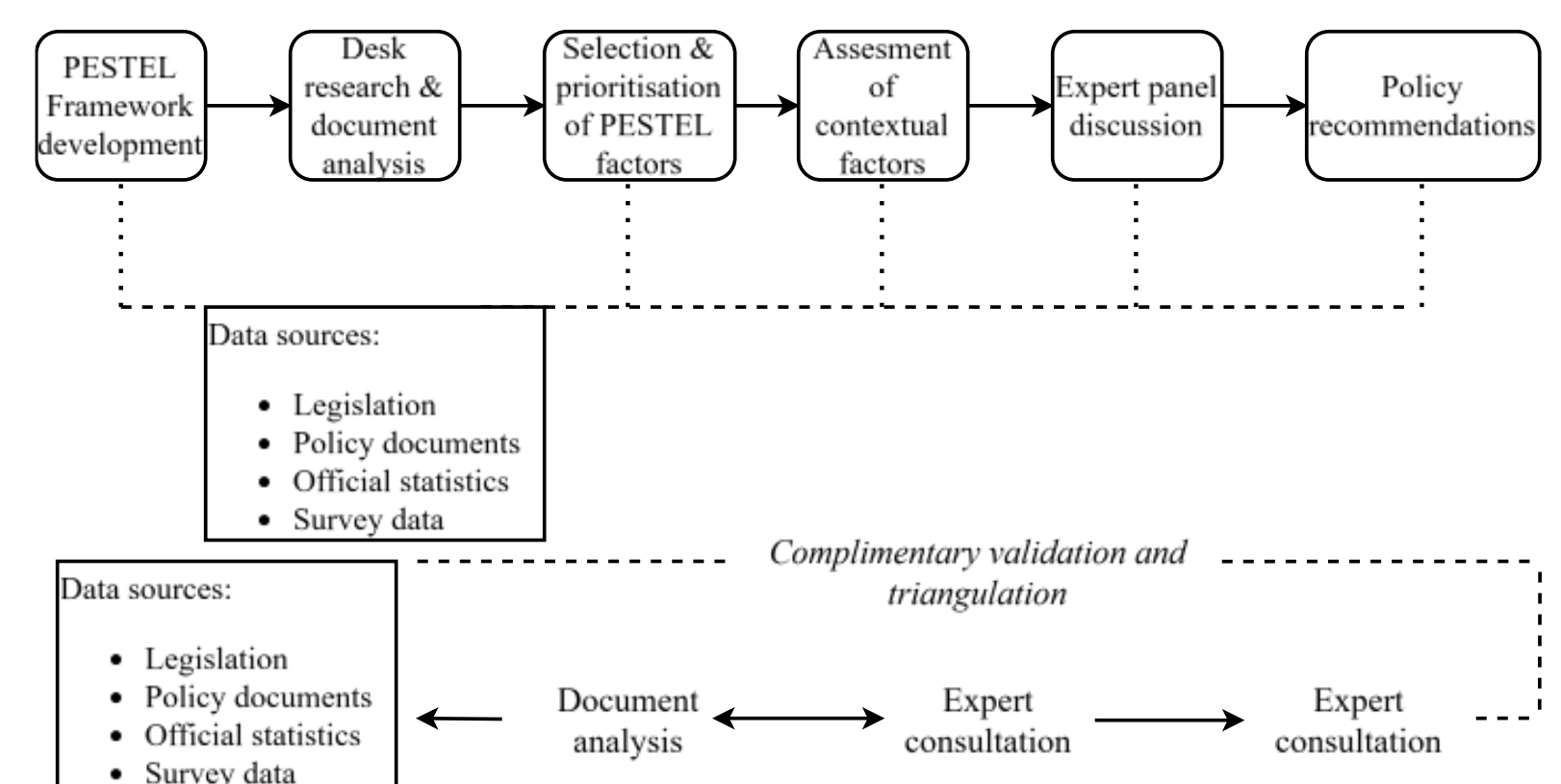
However, economic and social constraints-affordability pressures, income inequality, energy poverty and low institutional trust, continue to limit participation capacity and reduce the feasibility of collective engagement.

As a result, participation remains largely individualised, while collective forms of energy citizenship remain limited in practice, reflecting a structural imbalance between enabling conditions and actual implementation.

Introduction

Energy citizenship (ENCI) reframes citizens from passive energy consumers into active agents of energy system transformation. It spans engagement in renewable self-consumption, participation in energy communities, and involvement in energy-related decision-making processes, thereby extending citizen roles beyond consumption towards production, coordination and governance. In EU policy, ENCI is positioned as a key driver of decarbonisation, decentralisation and democratisation of energy systems, supporting the transition towards more distributed and participatory energy models. However, the practical development of ENCI remains uneven across Member States. While formal regulatory frameworks increasingly recognise citizen participation, the extent to which these opportunities translate into practice depends on socio-economic capacity, institutional arrangements, and implementation conditions. Latvia provides a critical case for examining these dynamics. The country demonstrates strong alignment with EU climate and energy objectives and has introduced legal and policy provisions supporting ENCI. At the same time, participation remains largely individualised, while collective citizen-led initiatives remain limited in practice.

Methods



A qualitative PESTEL-based approach was used to assess political, economic, social, technological, environmental and legal factors influencing ENCI development in Latvia. The analysis was based on systematic desk research of EU and national policy documents, legislation and statistical datasets, ensuring a comprehensive overview of the institutional and socio-economic context.

Results



Conclusions

